



Mopec

Control Slides

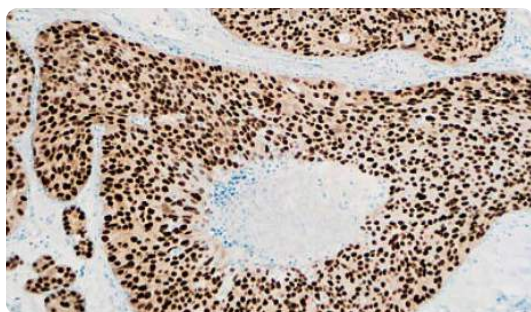
IHC | SPECIAL STAINS | NORMAL TISSUE | TMA

Mopec Control Slides

Mopec is dedicated to empowering pathology and anatomy professionals by providing a premier platform of products and solutions. Mopec Control Slides, designed on Mopec SuperWhite Adhesive Slides for FFPE human tissue, cover Special Stain, IHC, Normal Human Tissue, and Tissue Microarray (TMA), elevating diagnostic accuracy, safety, research, education, and disease treatment. Acknowledging diverse lab needs, we provide a unique option for ordering custom control slides, ensuring a precise fit to specifications.

Special Stain Control Slides

Special stains are essential for histology, as they offer detailed insight into the structure, function, and features of various cells and tissues. By using special stains, histologists can gain more precise information about the structures they are analyzing, leading to more accurate diagnoses, and improved pathology research. All positive control slides are on Mopec SuperWhite Adhesive Slides using Formalin Fixed Paraffin Embedded (FFPE) human tissue. Mopec Special Stains are available in boxes of 10, 20, and 100.

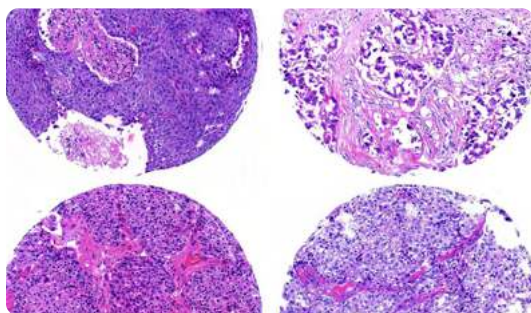
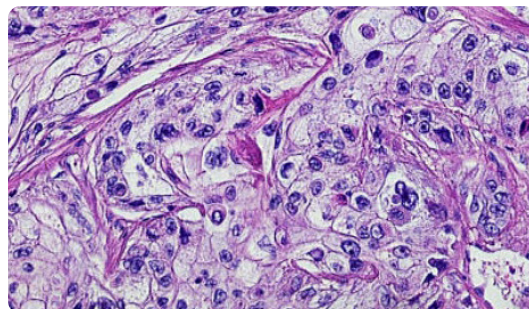


IHC Control Slides

IHC control slides play a crucial role in assessing the accuracy of the staining protocol, detecting any background staining, and determining sensitivity and specificity. The use of IHC control slides allows researchers to interpret their results with confidence, avoiding any false-positive or false-negative outcomes. All positive control slides are on Mopec SuperWhite Adhesive Slides using Formalin Fixed Paraffin Embedded (FFPE) human tissue. Mopec IHC Control Slides are available in boxes of 25 and 100.

Normal Human Tissue Control Slides

Human tissue control slides play a crucial role in maintaining the accuracy and reliability of diagnostic tests and experiments involving human tissue. They are essential quality control tools that help detect any issues related to the staining process or sample quality. All positive control slides are on Mopec SuperWhite Adhesive Slides using Formalin Fixed Paraffin Embedded (FFPE) human tissue. Mopec Normal Human Tissue Control Slides are available in boxes of 25 and 100.



Tissue Microarray Control Slides

Tissue Microarrays are used to analyze multiple individual tissue samples on one slide. Typically, one TMA control slide will contain several different specimens. TMAs can have various histological types of disease that need to be compared, or they can contain the same histological tissue type but with different behaviors. All positive control slides are on Mopec SuperWhite Adhesive Slides using Formalin Fixed Paraffin Embedded (FFPE) human tissue. Mopec Tissue Microarray Control Slides (TMAs) are available in boxes of 25.

Custom Control Slides

Mopec allows customers the option of ordering custom control slides for our histopathology and immunopathology product lines. A custom request allows you to modify any of our Mopec Control Slides to meet your lab's exact specifications. Commonly requested changes are tissue placement, drying method, and section thickness.



Explore our extensive range of control slides! Contact Mopec now to receive a comprehensive list of our complete product line.
Give us a call today at 800.362.8491.

IHC

Products						
5-HMC	CD 105	CK 20	Insulin Receptor	MYOGENIN	PGP9.5	SOX11
5-MC	CD 11b	CK 5	Involucrin	Myosin	PHH3	SOX 10
AAT (ALPHA-1 Antitrypsin)	CD 11c	CK 7	Islet-1	Nanog	Phospho EGFR	SOX 2
ACTH	CD 123	CK 8	ITM2A	Napsin A	PHOX2B	SOX 9
Adenovirus	CD 133	CK 8/18 LMW	Jagged1	NB84	PIN4 34E12/P63/AMACR	SPARC
Adrenergic Receptor beta 2	CD 138	Claudin 18	Kappa	N-Cadherin	PIT-1	SSTR2
Adrenomedullin	CD 14	c-MYC	Ki-67	NCAM	PLAG-1	STAT3
AE1/AE3	CD 142	CMV	Ki-67 MIB-1	NCR1	PLAP	STAT6
AFP	CD 146	Collagen 1	Ki67/DESMIN	NEK6	PLNA	STATHMIN
Akt	CD 15	Cyclin D1	L26	Nestin	P-Met	STING
Albumin IF	CD 163	COX2	LAG3 CST	NeuN	PMS2	SUZ12
Alizarin Red S	CD 172a	CK HMW 34bE12	LAMA5	Neurofilament	PNA	Synaptophysin
ALK	CD 184	DOG1	Lambda ISH	NF-1	PNL2	Syndecan-1(CD138)
AMACR P5045	CD 19	EBV	Laminin	NFAT	Podoplanin	Synuclein
AMHR2	CD 1a	ECAD	LC3 A/B	NfKb p50	POSTN (OSF2)	T356
Amylase	CD2	EMA	LCA	NfKb p65	PPAR-g	Tau
Androgen	CD 20	ESA	LEF-1	NIMPR14 (Neutrophil)	PPRIBP1	TB
Annexin A10	CD 200	Ep-CAM	Leptin Receptor	Nissl	PR	T-bet
Aquaporin 4	CD 206	ER	Leu 7 (CD57)	NK Cells	PrAP	TCEB
Arginase	CD 21	ER alpha	LFABP	NG2D	PRAD1	TCIRG1
Arginase-1	CD 23	ERG	LH	NKI-C3	PRAME	TCL-1
ARID1A	CD 24	FAP	LKB1	NKX2.2	PRDX2	TDP-43
AT8	CD 25	Factor VIII	LKB1	NKX3.1	PRKARIA	Tdt
AT100	CD 28	Factor XIIIa	LTBP1	NKX6.1	Prmt1	Ter 119
ATRX	CD 3	GATA3	LYSOZYME	NOS2	Proactin	TFE3
Aurora B	CD 30	GCDFF-15	LYVE1	Notch 1	PSA	Thrombomodulin
Aurora Kinase 2	CD 303	Gastrin	CSb-9	Notch 2	PS6	Thyroglobulin
Axin2	CD 31	GFAP	Mac-2	Notch 3	pSMAD5	TIA-1
AXL	CD 32	Glypican 3	Melanoma cocktail O1: HMB45/MART-1/Tyrosinase	NRAS	P-STAT3	TIM3
B72.3	CD 33	H3K27Me3	Mammaglobin	NSE	P-Synuclein	TLE1
BAP-1	CD 34	HBM6-1	MART-1	NTSE	P-TAU	TLNI
BAX	CD 35	HER2	Maspin(SERPINB5)	Nut	PTEN	TNFAIpha-IP2
BCL1	CD 38	HHV8	MAX	O13	PTH	Transthyretin
BCL 2	CD 4	HIF-1 alpha	MCL-1	OCT2	PU1	Treponema pallidum
BCL 6	CD 41	HNF1b	MCPyV	CS1-OCT3/4	QKI	Tyrosin
BCL 9	CD 43	H Pylori	MCV 203	Olig 2	RABL3	Tryptase
BCOR	CD 44	HLA CLASS 1	MDM2	Osteoprotegerin (OPG)	RAO51	TSH
BerEp4	CD 45	HMB45	Melan A	OVCA1(DPH1)	Ran	TSHR
BerH2	CD 47	HSA	Melanin Receptor	OX40 (CD134)	RANKL	TTF-1
Beta Amyloid	CD 498	HSV Type 1	Merlin	PI20	RBFox1	Tubulin B3
Beta Catenin	CD 5	HSV Type 2	Met	PI30	RBFox2	TUJ1
Beta-2 Microglobulin (B2M)	CD 56	HSV1 and 2 (3 tissue sections on each slide)	METTL3	PI6	RBM99	Twist
Beta-FGF	CD 62-P	HPV low-risk	MGMT	P21	RCC	TYROSINE
B-HCG	CD 68	HPV high-risk	MIB1	P27	RET	UCHL1
BIM	CD 69	HuC-HuD neuronal protein	MHCA/B	P2Y2	RO51	Uroplakin II
BMP 10	CD 7	human Chorionic Gonadotropin	MITF	P40	RUNX2	Uroplakin II/III
BMP 9	CD71 (transferrin receptor)	Hyaluronidase	MLH-1	P504S	RXR Alpha	UVRAG
Bodian	CD 79a	HYDROXYLASE	MMP9	P53	S100	VEGF
Brachyury	CD 8	ICAM-1	MMP17	P57	S-100A	VEGF R1
BRAF V600E	CD 80	ICOS	MOC31	P62	SALL4	VEGFR2(CD309)
BRCA 1	CD 86 (B7-2)	IDH1/2 (R132H)	MPO	P63	SATB2	Villin
BrdU	CD 87	IDH1 WT	MSA	pAKT	SCGF	Vimentin
CIQ	CD 90	IDH2 WT	MSH2	Pan Keratin	SDHA	VISTA
C3	CD 99	IDO	MSH6	Parafibromin	SDHB	Vitamin D Receptor (VDR)
CA199	CD 117	IFITM1	MTDH	Parathyroid Hormone PTH	Securin	VPERB1
CAIX	CDK4	IgA	MTNR1B	PAX-2	SF-1	VPERB3
Calcitonin	CDK6	Ig D	MUC1(CD227)	PAX-5	SMA	VWF
Caldesmon	CDX-2	Ig E	MUC16 (CA-125)	PAX-6	SMAD4	WNT2
Calponin	CEA	IGFIR	MUC-2	PAX-8	SMAD5	WT1
Calretinin	CEA Poly	IgG	MUC4	PAXBRI	SMARCA2	Zeb1
CAM 5.2	CEACAM1	IgM	MUC5AC	PCNA	SMARCA4(BRG1)	Zeb2
CAMTA1	Chromogranin A (CgA)	IL6	MUC-6	PD-1	SMARCE1	Zo-1
Caspase 3	Chymase	IL-9	MUC7	PDGFRA	SMI-31	
Cathepsin	CIT	IL-10	MUMIP (IRF4)	PD-L1 (LUNG)	SM-MHC	
Cathepsin K	CITED1	Inhibin	Musashi-1	PD-L2	Smooth Muscle Actin	
CCN2	CK 5/6	INI-1	MYB	PDX-1	Smoothelin	
CCNB3	CK 14	INOS	MYC	Pepsinogen	Snail	
CD 10	CK 19	INPP4B	MYO1	Perforin	Somatostatin	

SPECIAL STAIN

Products
Acid fast bacteria; Ziehl-Neelsen stain
amyloid; Congo red stain
Alcian blue
acid mucins; Alcian blue/PAS
Argyrophil
bile; Hall's Bilirubin Stain
Candida sp.; GMS
calcium; Von Kossa stain
copper; Rhodamine stain
elastin; Verhoeff stain
Acid fast bacilli; Fite stain
Gram+ stain
Giemsa stain
Giemsa stain
Helico Bacteria: (pylori HP); Field's Stain (rapid test); Warthin-Starry stain
Aspergillus; GMS
hepatitis B; Orcein stain
Iron (ferric) deposit at a moderate to high level; Gomori Prussian Blue
Iron (ferric) deposit at a low to moderate level; Gomori Prussian Blue
Iron (colloidal); Mowry's stain
mast cells; Toluidine Blue
Melanin; Argentaffin, fontana-masson stain
Movat-Russell Pentachrome
Mucin; Mucicarmine
Liver Tissue with fungus - Periodic Acid Schiff
Liver & No fungus - Periodic Acid Schiff
Periodic Acid Schiff with digestion; PAS diastase stain (PAS-D)
Striations; phosphotungstic acid hematoxylin stain
pneumocystis; GMS
Steiner-Steiner stain
spirochete
Reticulin; Snook's stain
trichrome; Masson's stain
M. leprae bacteria
Warthin-Starry stain
Luxol Fast Blue
M. tuberculosis; Ziehl-Neelsen
Brain; Bielschowsky stain
May-Grünwald Stain
amyloid; Crystal violet stain
Safranin-O, cartilage

TMA

Products
Breast Tumors
Breast Cancer and Normal Adjacent Tissue
Normal human tissue - Liver
Normal human tissue - Lung
Normal human tissue - Kidney
Normal human tissue - Colon
Normal human tissue - Tonsil
Normal human tissue - Skin
Normal human tissue - Prostate
Normal human tissue - Breast
Normal human tissue - Lymph node
Normal human tissue - Uterus
Normal human tissue - Testis
Normal human tissue - Placenta
Normal human tissue - Thyroid
Normal human tissue - Stomach
Normal human tissue - Pancreas
Normal human tissue - Spleen

NORMAL HUMAN TISSUE

Products
Human Aorta
Human Artery
Human Heart
Human Esophagus
Human Appendix
Human Gall Bladder
Human Stomach
Human Small intestine, duodenum
Human Small intestine, ileum
Human Small intestine
Human Intestine, colon
Human Liver
Human Pancreas
Human salivary gland
Human Adrenal gland
Human Lymph Nodes
Human Pineal Gland
Human Pituitary
Human Spleen
Human Thyroid
Human Thymus
Human Tonsil
Human Elastic cartilage
Human fibrocartilage
Human Hyaline cartilage
Human Muscle (skeletal)
Human Tendon
Human Adipose
Human Skin
Human Brain
Human cerebellum
Human Nerve
Human medullated nerve
Human Spinal Cord
Human Spinal ganglion
Human Breast
Human Cervix
Human Fallopian Tubes
Human Foreskin
Human Ovary
Human Placenta
Human Prostate
Human Testis
Human Umbilical Cord
Human Uterus
Human Vas Deferens
Human Lung
Human Trachea
Human Bladder
Human Kidney
Human Ureter



Why choose Mopec?

Mopec is elevating pathology with the most advanced platform of equipment and supplies for an integrated ecosystem to optimize pathology workflows, specimen tracking, and user safety.

Elevating Pathology

At Mopec, we're not just supplying equipment; we're raising the standard of care in laboratories.

Advanced & Configurable Platform

A suite of solutions that adapts to your lab's needs. Our advanced platform is as flexible as it is powerful, designed to grow with your lab.

Integrated Ecosystem

Our equipment is designed for integration of ancillary equipment and is the launching point for digital pathology tools and AI assistance.

Optimized Pathology Workflows

Our tools are tailored to streamline your lab's workflow, cutting through complexity to deliver a smoother, faster, and more reliable grossing process.

Improved Specimen Tracking

With the integration of tools for on-demand cassette printing, digital photography, and AI, you can track every specimen with unmatched precision.

Ensure User Safety

Our equipment meets the highest safety standards, protecting users from formalin exposure and workplace injuries as they advance the field of pathology.

