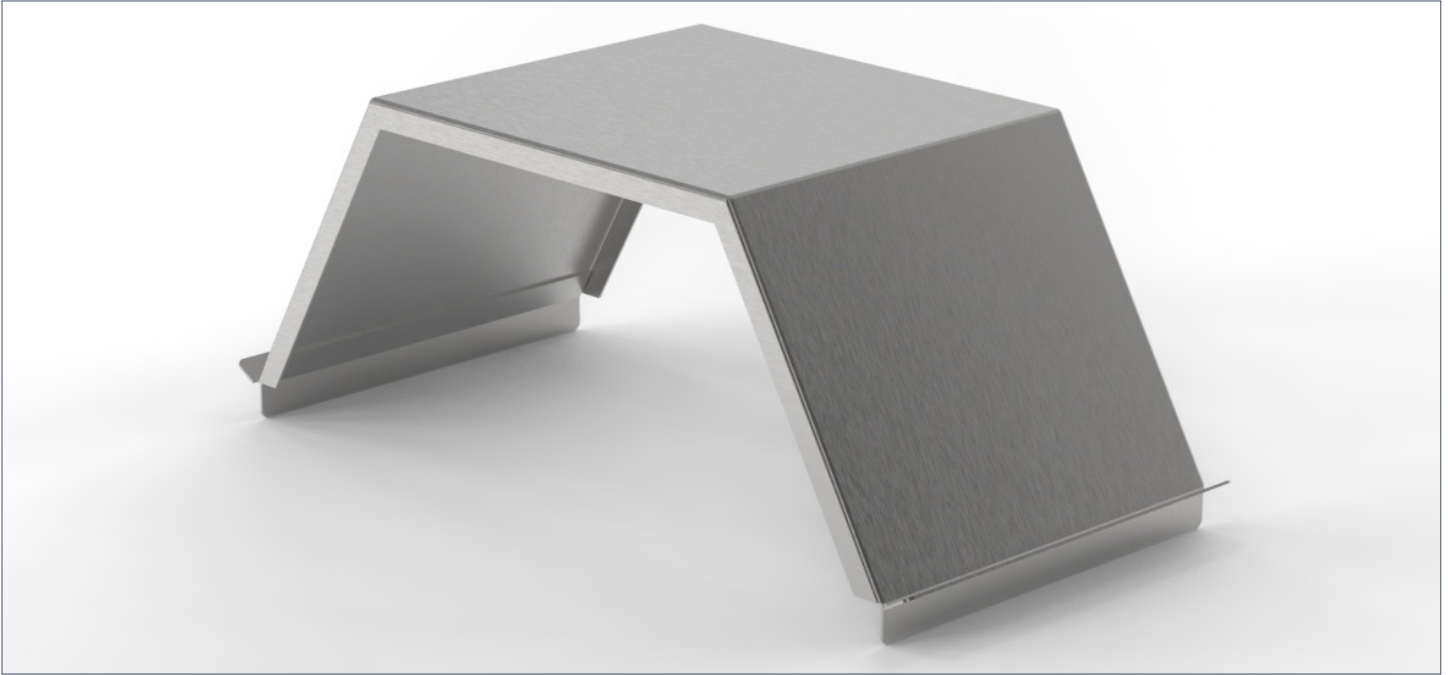


Bridge-Style Book Rest for Dissection Table



SPECIFICATIONS

Construction

- Built to support a book upright on each side of the cart for users and students can read while working on a cadaver

Notes

- Must remove one grid plate to use on hooded HB series carts

Materials

- 304 stainless steel construction with a polished No. 4 finish

Dimensions

- 25.3" L x 12" W x 10" H

Compatibility

- HA100
- HA400
- HB1400
- HB1410
- HB1500
- HB1510
- HB1550

MOPEC
GROUP

Mopec
ELEVATING PATHOLOGY

MORTECH
MANUFACTURING

www.mopecgroup.com

800.362.8491

800 Tech Row, Madison Heights, MI