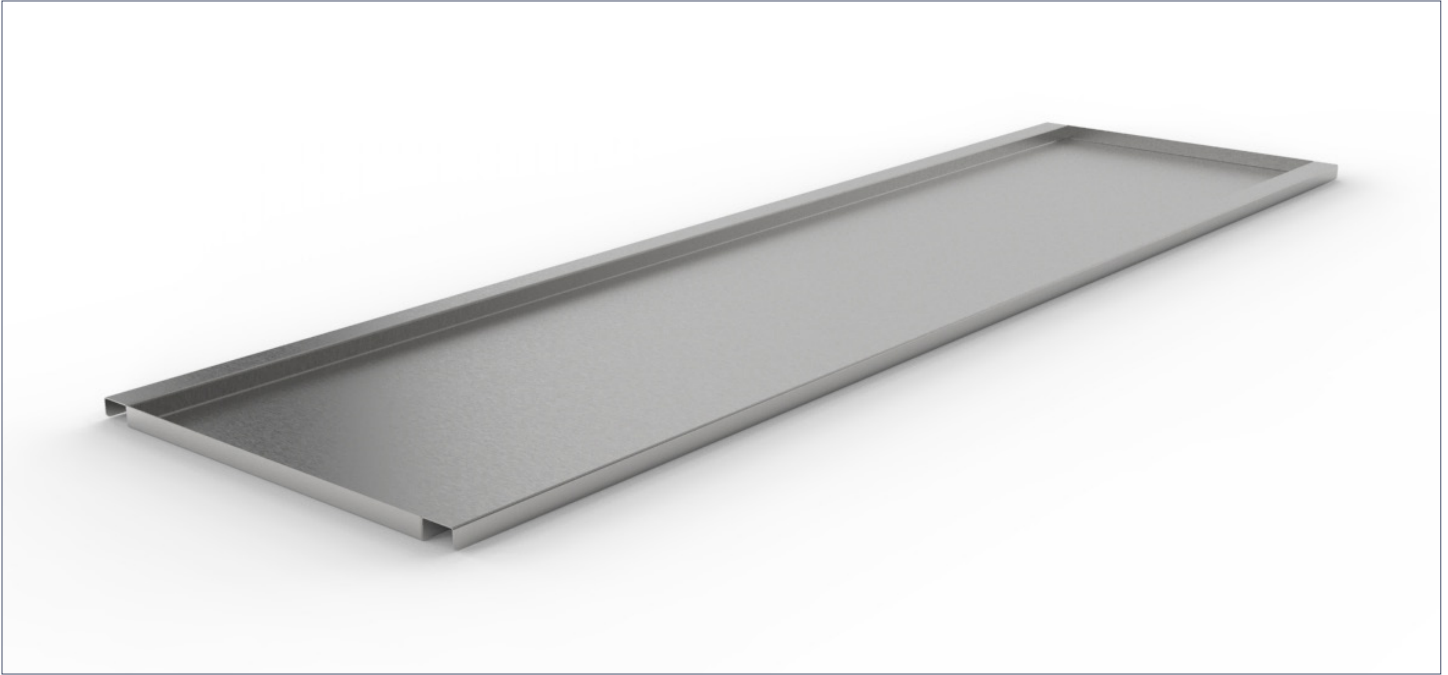


Full-Length Shelf for Dissection Table



SPECIFICATIONS

Construction

- Built to span the full length of the underside of your dissection table for storage

Materials

- 304 stainless steel construction with a polished No. 4 finish

Dimensions

- 82.4" L x 23.3" W x 1" H
- Useable area: 82.2" L x 19.6" W

Compatibility

- HA100
- HA210
- HA400
- HB1400
- HB1410
- HB1500
- HB1510

MOPEC
GROUP

Mopec
ELEVATING PATHOLOGY

MORTECH
MANUFACTURING

www.mopecgroup.com

800.362.8491

800 Tech Row, Madison Heights, MI