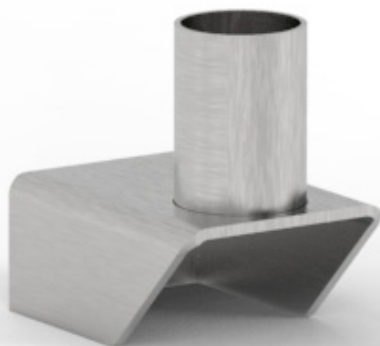


Ensemble Hitch Mount



SPECIFICATIONS

Construction

- Designed to attach onto the front of the grossing station, just below the work surface

Materials

- 304 stainless steel construction with a polished No. 4 finish

Dimensions

- 2.5" L x 3.5" D x 3.4" H

Performance

- Can attach onto either the left or right side
- Perfect for giving you an additional place to put your AX032 keyboard arm, making it ideal for people who prefer to type or perform their grossing sitting down

Capacity

- 25 lbs

Compatibility

- Fits all Mopec Maestro and Maestro Encore grossing stations
- Used with AX032 keyboard arm
- Included with AX039 writing ledge

MOPEC
GROUP

Mopec
ELEVATING PATHOLOGY

MORTECH
MANUFACTURING

www.mopecgroup.com

800.362.8491

800 Tech Row, Madison Heights, MI