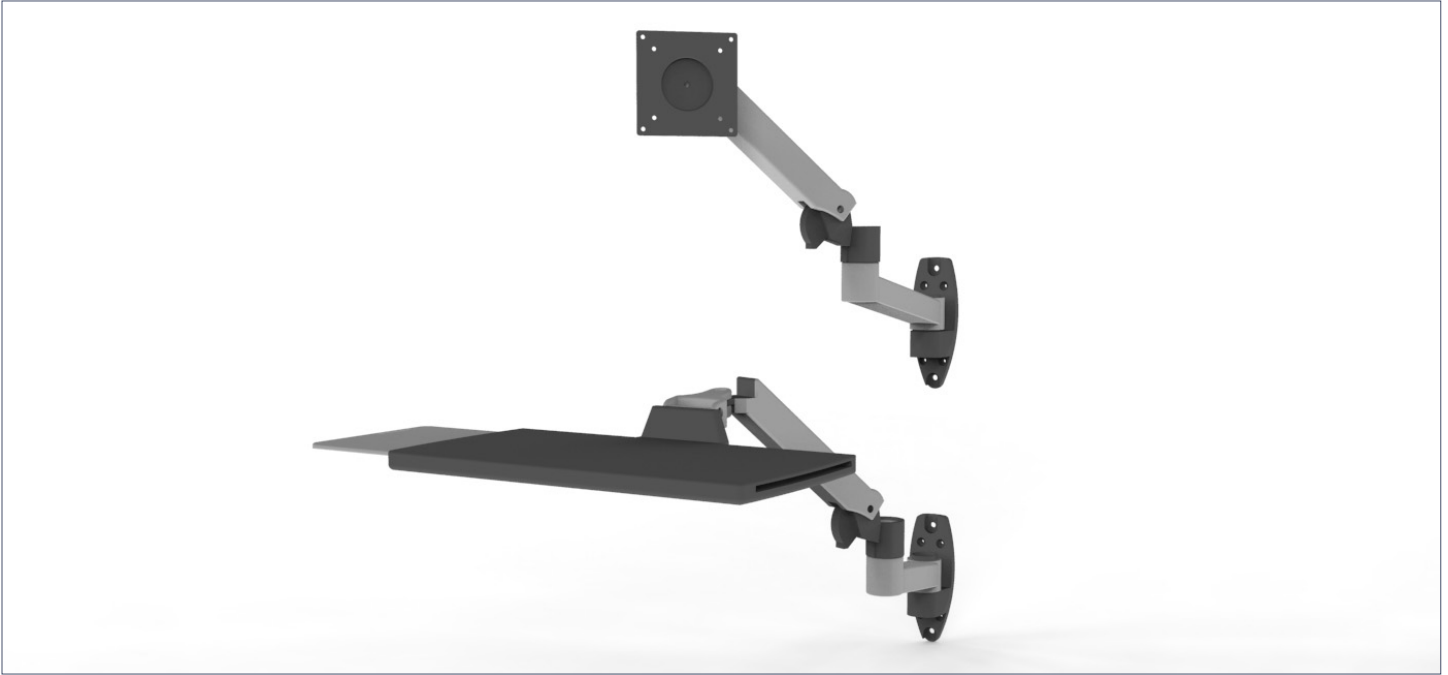


Ensemble Keyboard Arm and Monitor Mount Arm Combination



SPECIFICATIONS

Construction

- Designed to mount into the existing track on the column opposite the sink
- Once installed, track allows arm to be moved up and down the track by loosening two large, knurled knobs, without needing any tools

Materials

- Powder-coated cast aluminum and grade 6061 aluminum for the mounting bracket

Dimensions

- AX032 Keyboard Arm: 17.9"–22.3" L x 33.5" D x 16.1" H
- AX034 Monitor Arm: 12.3" L x 10.2" D x 17.2" H

Capacity

- AX032 Keyboard Arm: 5 lbs
- AX034 Monitor Arm: 22 lbs

Compatibility

- Fits all Mopec Maestro and Maestro Encore grossing stations

Performance

- Has several pivot points to articulate up and down, and side to side.
- Can be pulled out when in use, then pushed back when not in use
- Keyboard arm has 33" and 180° of sweep, and 13" of lift
- Monitor arm has 25" of maximum extension, 13" of lift, 180° of monitor pan, and 85° of monitor tilt

NOTE:

- If ordering separately, see AX032 Keyboard Arm and AX034 Monitor Arm.

MOPEC
GROUP

mopec
ELEVATING PATHOLOGY

MORTECH
MANUFACTURING

www.mopecgroup.com

800.362.8491

800 Tech Row, Madison Heights, MI