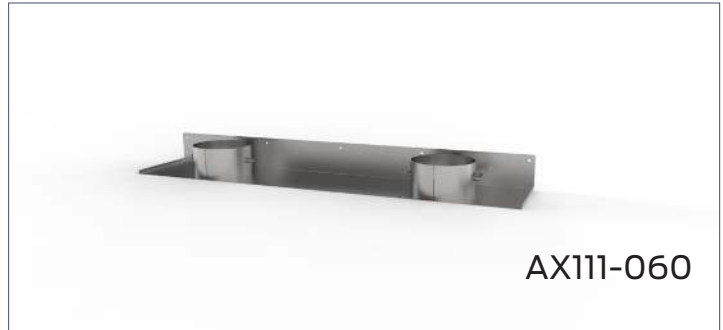


# Maestro Exhaust Dampening Kit with 8" Ducts



## SPECIFICATIONS

### Construction

- Designed to integrate adjustable exhaust dampeners into your grossing station to help your HVAC/facilities personnel balance the airflow to the grossing stations

### Dimensions

- 10.3" D X 4.5" H
- AX111-048: 41" L
- AX111-060: 53" L
- AX111-072: 65" L
- AX111-096: 89.1" L

### Materials

- 304 stainless steel sheetmetal and hardware

### Compatibility

- Fits the Mopec Maestro and Maestro Encore grossing stations of the accompanying sized unit

## Variations

Model No.	Description	Dimensions
AX111-048	Exhaust Dampening Kit, 8" Ducts, 48" Units	41" L x 10.3" D x 4.5" H
AX111-060	Exhaust Dampening Kit, 8" Ducts, 60" Units	53" L x 10.3" D x 4.5" H
AX111-072	Exhaust Dampening Kit, 8" Ducts, 72" Units	65" L x 10.3" D x 4.5" H
AX111-096	Exhaust Dampening Kit, 8" Ducts, 96" Units	89.1" L x 10.3" D x 4.5" H

**MOPEC**  
GROUP

**Mopec**  
ELEVATING PATHOLOGY

**MORTECH**  
MANUFACTURING

[www.mopecgroup.com](http://www.mopecgroup.com)

800.362.8491

800 Tech Row, Madison Heights, MI