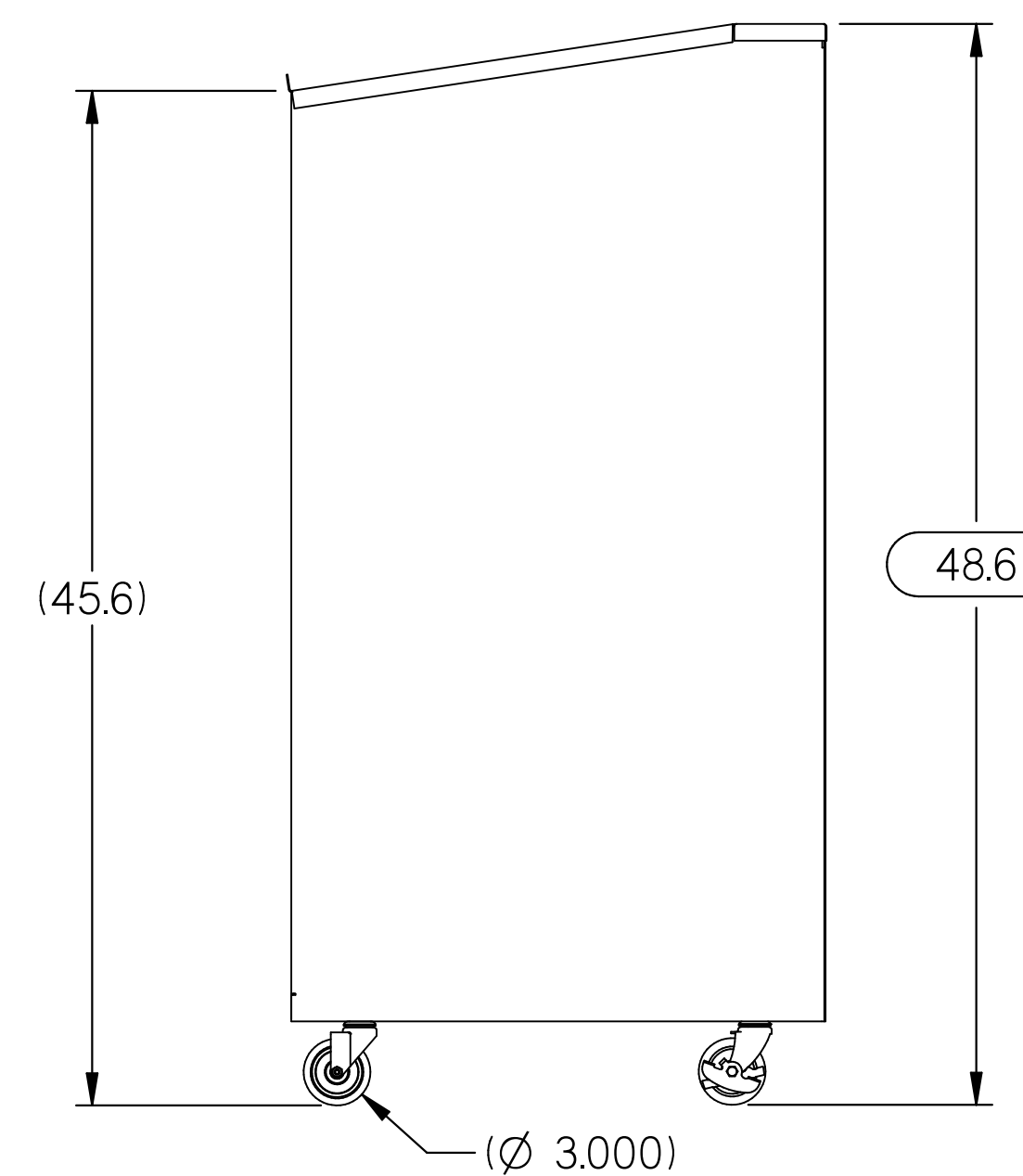
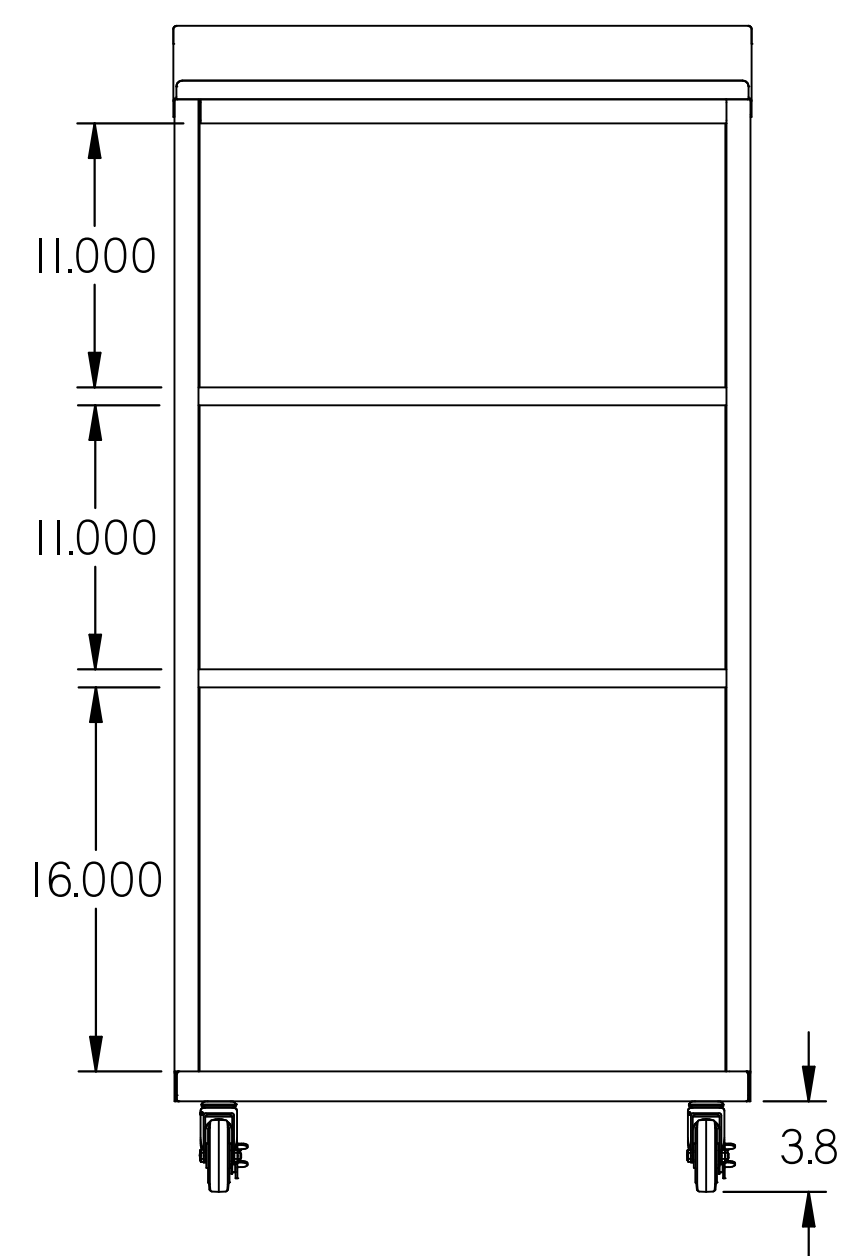
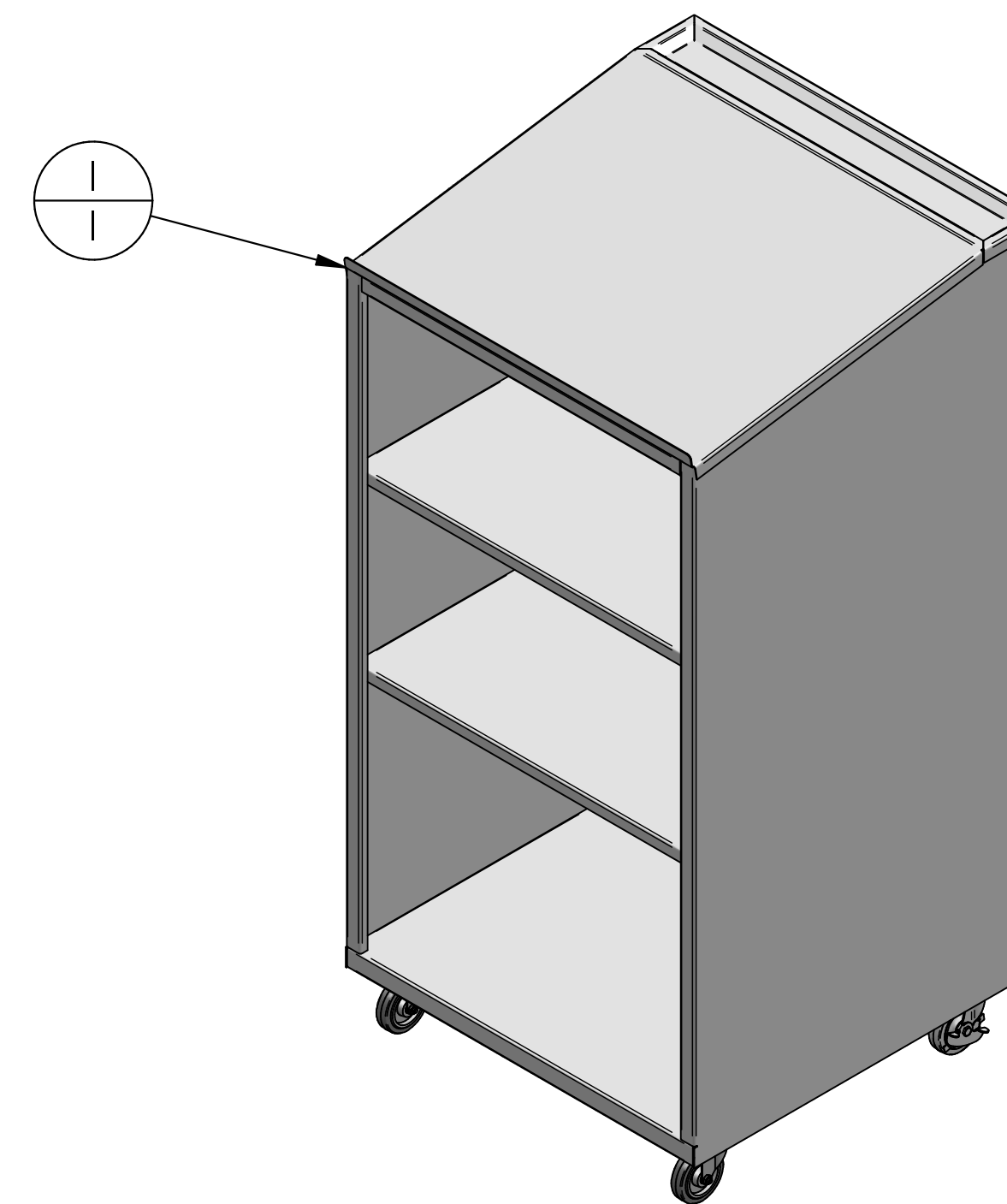
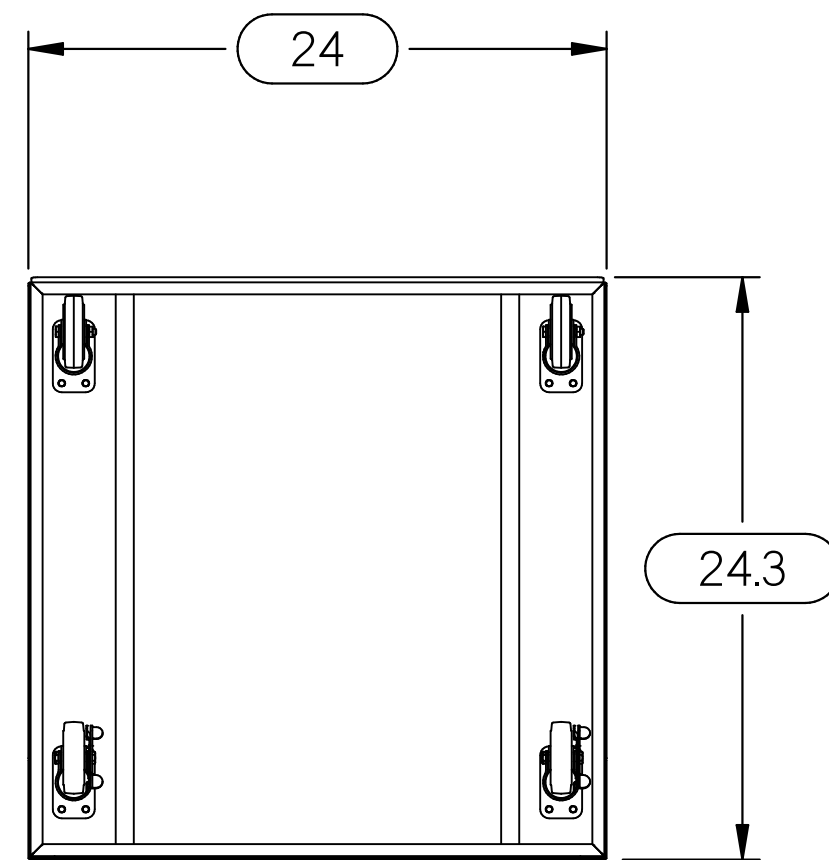


| REV | DESCRIPTION     | DATE      | ECN # | APPR |
|-----|-----------------|-----------|-------|------|
| A   | INITIAL RELEASE | 00-XXX-19 | XXXXX | MM   |
| C   | UPDATED S0101   | 31-AUG-20 | 1016  | MM   |
|     |                 |           |       |      |
|     |                 |           |       |      |



|  |   |                                     |  |                             |                        |                                 |              |
|--|---|-------------------------------------|--|-----------------------------|------------------------|---------------------------------|--------------|
| THIS DOCUMENT CONTAINS<br>PROPRIETARY INFORMATION OF<br>MOPEC, AND MAY NOT BE COPIED IN WHOLE<br>OR PART, AND NO USE SHALL BE MADE OF<br>IT OTHER THAN FOR WHICH IT HAS BEEN<br>SUBMITTED WITHOUT THE WRITTEN<br>PERMISSION OF A MOPEC MANAGER<br>MOPEC 2024 | UNLESS OTHERWISE SPECIFIED<br>ALL DIMENSIONS IN INCHES<br>TOLERANCES  | <br><br>MOPEC MORTECH MANUFACTURING | DRAWN BY<br>B. LAY<br>DATE 8/31/2020   | PART NUMBER<br>BJ100        |                        |                                 |              |
|  | 0.0 ± 0.1 in<br>0.00 ± 0.05 in<br>0.000 ± 0.010 in<br>0.0000 ± 0.0010 in<br>ANGLES ± 0.5°<br>BREAK ALL CORNERS 0.063 X 45°<br>ALL FILLET RADII R0.063 / 0.125 in<br>INSPECT OVAL DIMENSIONS |                                     | CHECKED BY<br>DATE ---<br>8/31/2020<br>APPROVED BY<br>DATE: M.McCLAIN<br>8/31/2020 | DESCRIPTION<br>BJ100-A .asm | FILE NAME<br>BJ100.dft |                                 |              |
|  |   | DRAWN TO<br>3RD ANGLE<br>PROJECTION |  | SIZE<br>A2                  | SCALE<br>1:8           | DO NOT SCALE<br>IF IN DOUBT ASK | SHEET 1 OF 2 |

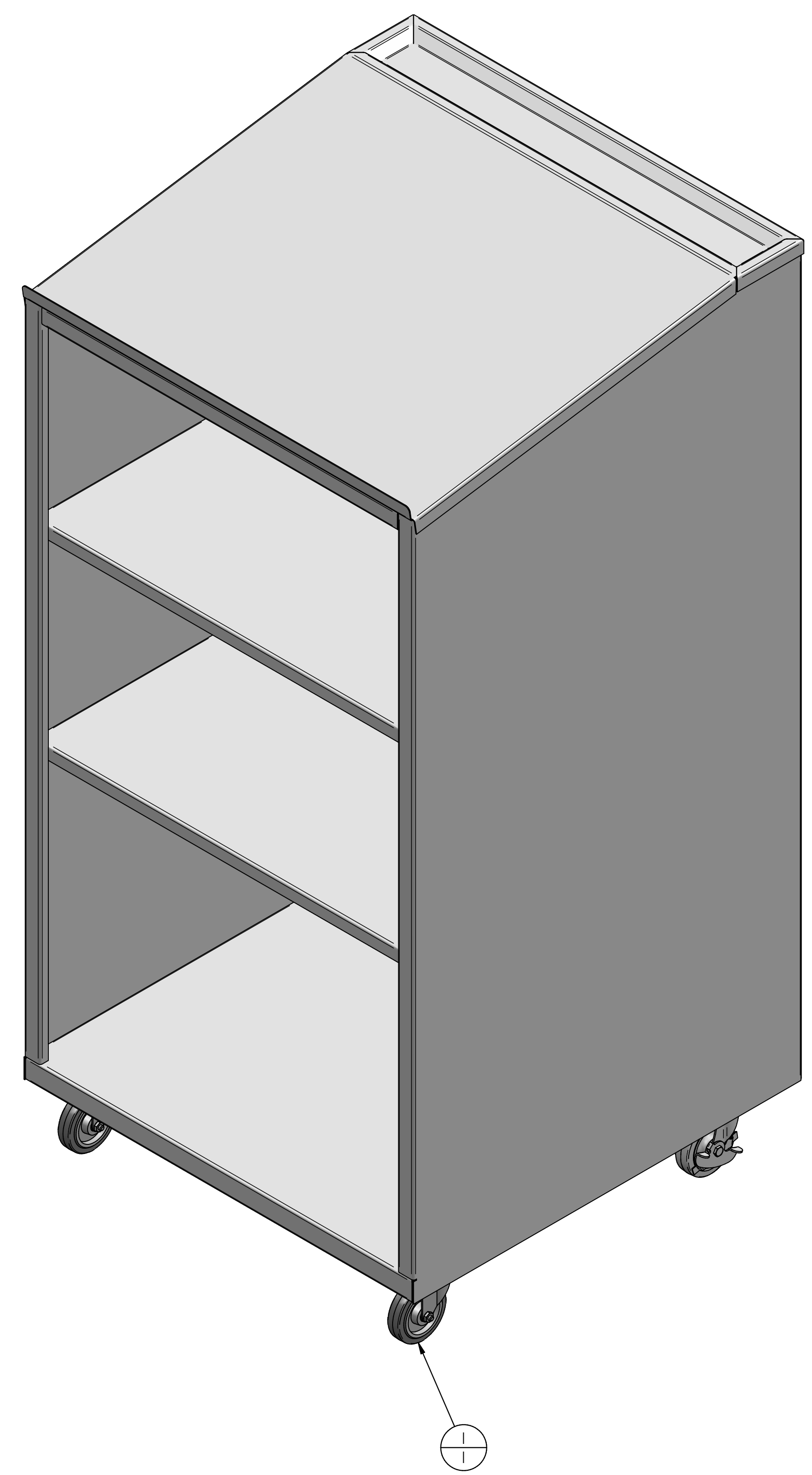
\*BJ100.dft\*

I 2 3 4 5 6 7 8 9 10 11

| REV | DESCRIPTION     | DATE      | ECN # | APPR |
|-----|-----------------|-----------|-------|------|
| A   | INITIAL RELEASE | 00-XXX-19 | XXXXX | MM   |
| C   | UPDATED S0101   | 31-AUG-20 | 1016  | MM   |
|     |                 |           |       |      |
|     |                 |           |       |      |

A  
B  
C  
D  
E  
F  
G  
H

A  
B  
C  
D  
E  
F  
G  
H



| Item Number | Quantity | File Name | Title | Material | Revision |
|-------------|----------|-----------|-------|----------|----------|
| I           | I        | S0101.asm | Bj100 |          | B        |

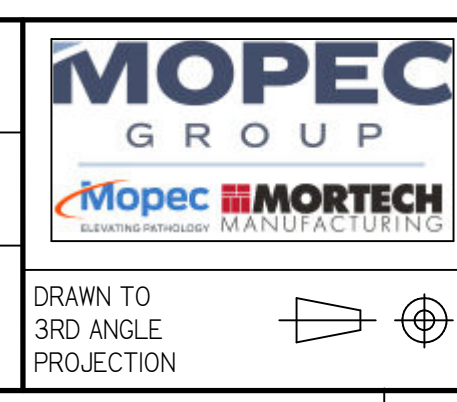
THIS DOCUMENT CONTAINS PROPRIETARY INFORMATION OF MOPEC, AND MAY NOT BE COPIED IN WHOLE OR PART, AND NO USE SHALL BE MADE OF IT OTHER THAN FOR WHICH IT HAS BEEN SUBMITTED WITHOUT THE WRITTEN PERMISSION OF A MOPEC MANAGER

MOPEC 2024

UNLESS OTHERWISE SPECIFIED ALL DIMENSIONS IN INCHES

TOLERANCES 0.0 ± 0.1 in  
0.00 ± 0.05 in  
0.000 ± 0.010 in  
0.0000 ± 0.0010 in  
ANGLES ±0.5°

BREAK ALL CORNERS 0.063 X 45°  
ALL FILLET RADII R0.063 /0.125in  
INSPECT OVAL DIMENSIONS



DRAWN BY B. LAY  
DATE 8/31/2020  
CHECKED BY  
DATE 8/31/2020  
APPROVED BY  
DATE M. McCLAIN 8/31/2020

PART NUMBER BJ100  
DESCRIPTION BJ100-A .asm  
SIZE A2 FILE NAME BJ100.dft  
SCALE 1:1  
DO NOT SCALE IF IN DOUBT ASK  
SHEET 2 OF 2

\*BJ100.dft\*

I 2 3 4 5 6 7 8 9 10 11