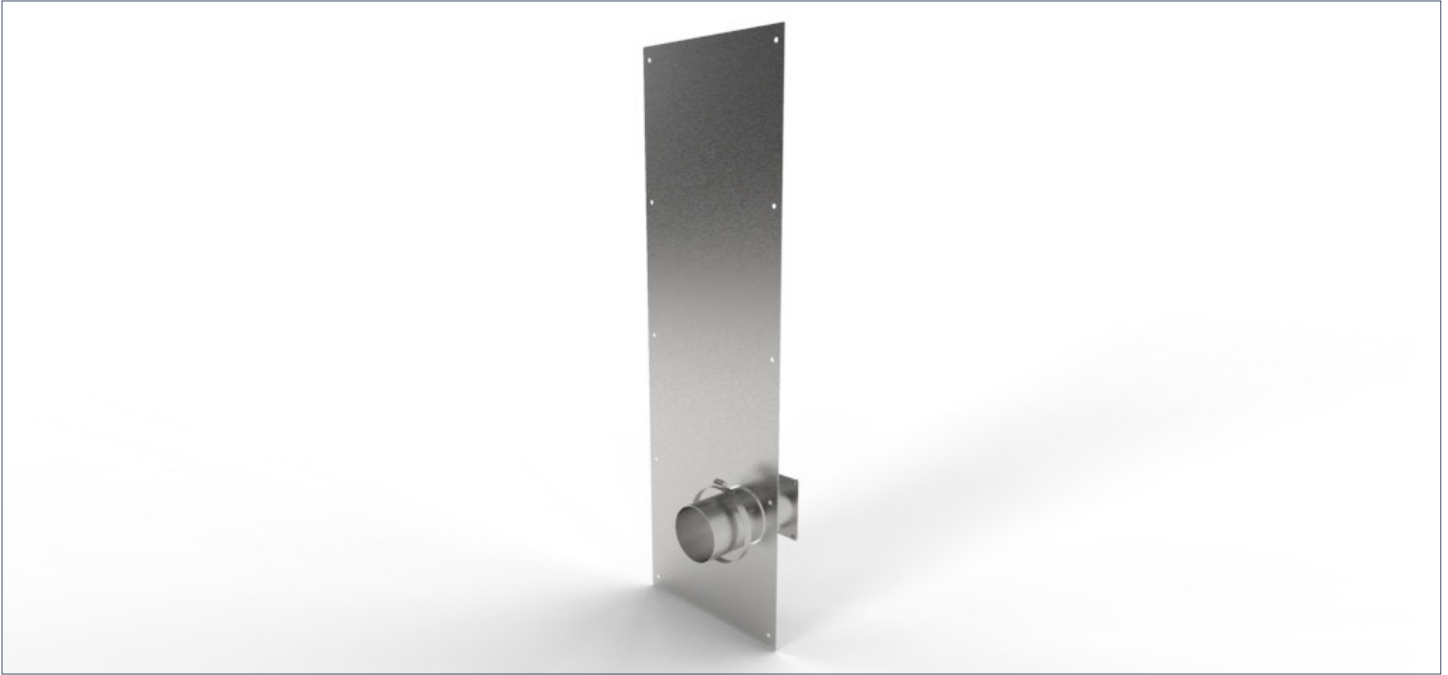


Maestro Auxiliary Side Vent Port



SPECIFICATIONS

Construction

- Designed to be an extra source of airflow for an existing device
- Creates between 60-120 CFM of airflow for an existing device, such as a vented cabinet
- Includes a side panel with 4" duct stub, 2 clamps, and 6' of 4" flexible duct

Materials

- 304 stainless steel construction with #4 finish

Dimensions

- 12.8" W x 4.5" D x 39.6" H

Compatibility

- Compatible with all Maestro and Maestro Encore grossing stations

NOTE:

- Requires 8" - 10" of space next to the grossing station where side panel needs to be installed
- Must go on the same side of the sink of your existing grossing station

MOPEC
GROUP

Mopec
ELEVATING PATHOLOGY

MORTECH
MANUFACTURING

www.mopecgroup.com

800.362.8491

800 Tech Row, Madison Heights, MI